



LAKE • GEORGE
WATERKEEPER®

PO Box 591, Lake George, NY 12845
Tel: (518) 668-5913 Fax: (518)-668-5915
Email: info@lakegeorgewaterkeeper.org
www.lakegeorgewaterkeeper.org

August 25, 2010

Mr. Roger Smith
Lake George Park Commission
P.O. Box 747
Lake George, NY 12845

Re: Gull Bay Road Extension Culvert

Dear Mr. Smith:

Our office was contacted regarding repair work for the removed culvert and subsequent washout that occurred on Gull Bay Road Extension resulting in erosion and sedimentation to Lake George. It was my understanding the drainage plan was prepared and submitted to the Lake George Park Commission.

When I visited the site on August 11, 2010, there had been some work performed on the remediation work and Gull Bay Road Extension was passable. However, I would like to provide the following observations regarding the installation and status of work:

Culvert & Emergency Overflow Inlet:

4 culverts [(3) 24" and (1) 12" corrugated HDPE pipes] are installed for primary conveyance of runoff and will direct flow to the south. There is an emergency overflow provided consisting of a 24" corrugated HDPE with a 90°elbow and raised outlet.

- The western 24" culvert inlet is blocked by rip rap that creates an entrance problem. This will restrict flow and increase the potential of the road washing out.
- The elevation of the 24" emergency overflow appears to be level with the existing road. This will result in water flowing across the road instead of being conveyed through the culvert creating erosion and sedimentation problems.



Culvert Outlet:

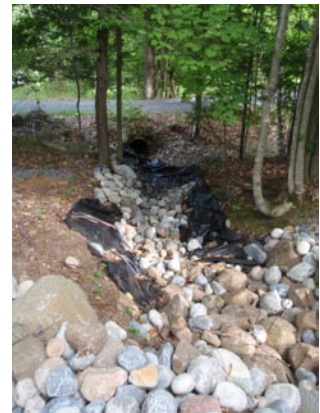
The (4) main channel culverts discharge to the south to a partial stone and earthen channel with filter fabric. Construction is incomplete and inadequate.

- The stone outlet protection appears to be incomplete. This will fail to adequately reduce outlet velocities and will result in the potential for erosion and sedimentation.
- The lower portion of the earthen channel is unprotected resulting in the potential for erosion and sedimentation.
- The outlet channel does not appear to be completely excavated to allow free discharge. This will result in ponding and further potential of erosion.



Emergency Overflow Outlet:

The 24" emergency overflow discharges to the existing channel from the removed culvert where significant erosion existed. Filter fabric has been installed on the upper section immediately downstream of the discharge. Stone channel protection has been partially installed. There is no bare earth exposed limiting the potential for erosion.



No stabilization or restoration work has been performed on the downstream channel section that discharges to Lake George. Existing sediment remains in the channel. The channel should be laid back to provide a greater surface area that will reduce velocity and the potential for further erosion.



Having been present with you at the site this May, I know that the Lake George Park Commission is aware of the situation and has taken some measures to resolve the condition. It is our opinion the owner has had ample time to properly address the current situation and has failed to adequately stabilize the site. The Lake George Waterkeeper recommends the Commission visit the site and take the necessary measures to have the site properly stabilized and convey runoff, including enforcement measures. It is necessary to immediately eliminate the potential for further erosion and sedimentation at this site as well as ensure public safety.

Thank you for your attention to this matter. The Lake George Waterkeeper looks forward to working with the Lake George Park Commission to defend the natural resources of Lake George and its watershed.

Sincerely,

A handwritten signature in black ink that reads "Chris Navitsky". The signature is written in a cursive, slightly slanted style.

Christopher Navitsky, PE
Lake George Waterkeeper

cc: John LaPointe – Town of Putnam Supervisor
Galen Seerup – Town of Putnam Planning Board Chairman